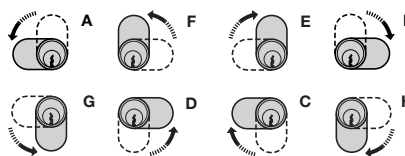


# CYLINDER CAM LOCKS

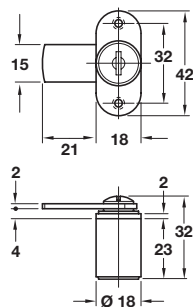
- > 90° Closure direction:
- > Closure directions can be altered by re-positioning the cam, but always moving in the same direction:  
Closure direction A can be altered to D, F or G  
Closure direction B can be altered to C, E or H



## Cylinder cam lock without key trap



Right hand, direction A version



- > With Ø 18 mm cylinder
- > For vertical mounting
- > Closure travel 90°
- > Without key trap; key can be removed in open or locked position
- > 5 plate levers = 200 possible key changes
- > Matt nickel-plated zinc alloy mounting plate and cylinder
- > Galvanized steel lever
- > Accessories: 2x keys, 1x locking lever
- > No master key possible
- > Order qty: 1 pc

### Standard keying

Closure direction 90° A (D,F,G) 90° B (C,E,H)

### Random key changes (no master key possible)

235.04.609 -

### Keyed alike (no master key possible)

Key change FH1	235.04.814	235.04.912
Key change FH2	235.04.823	235.04.921
Key change FH3	235.04.832	235.04.930
Key change FH4	235.04.841	235.04.949
Key change FH5	235.04.850	-

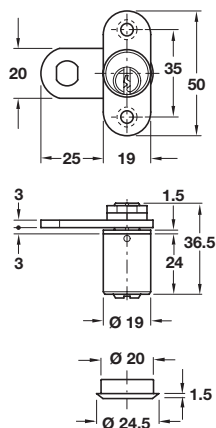


Order cylinder rosette separately, shown on page 96

## Cylinder cam lock with key trap



Right hand, direction A version



- > With Ø 19 mm cylinder
- > For vertical mounting
- > Closure travel 90°
- > With key trap; key can only be removed in locked position
- > 5 pairs of pin tumblers = 10,000 possible key changes
- > Galvanized steel locking lever and securing nuts
- > Matt nickel-plated zinc alloy mounting plate
- > Matt nickel-plated brass cylinder
- > Accessories: 2x keys, 1x cylinder rosette, 1x locking lever and 2x securing nuts
- > Order qty: 1 pc

235.03.602 REPLACED BY 235.03.200  
235.03.817 REPLACED BY 235.03.201  
235.03.915 REPLACED BY 235.03.211

### Standard keying

Closure direction 90° A (D,F,G) 90° B (C,E,H)

### Random key changes (no master key possible)

235.03.200 235.03.210

### Keyed alike (master key possible - custom master keying below)

Key change H1 235.03.201 235.03.211

### Custom master keying\*

Cat. No.

With master key system 235.03.698

With general master key system 235.03.699



\*For master key systems please state left hand, right hand or drawer lock, how many random keys and how many master keys are required

PAGE AMENDED  
18.09.19/2