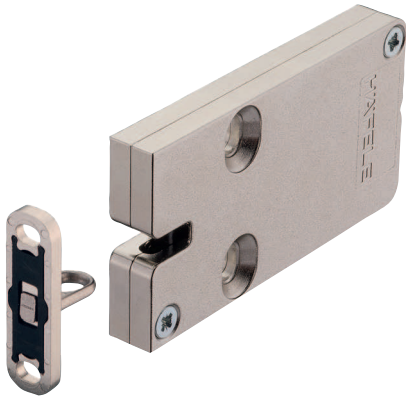


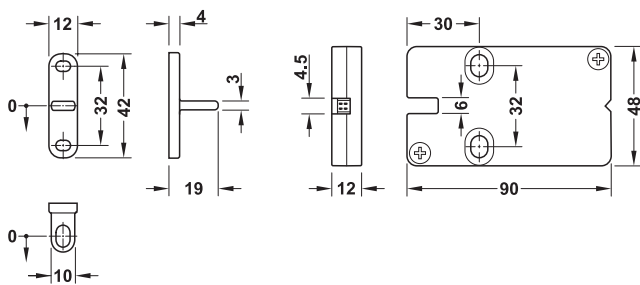
Dialock EFL 3 Furniture lock case



- > Application: Mains-operated electric lock for indoor use. For hinged doors, flaps, sliding doors, drawers or tambour doors in furniture, office and store equipment
- > Version: Electromotive locking, magnetic interactions cannot take place. Self adjusting locking component with magnet, locking late crossways. For 3D tolerance compensation. Flat type 12 mm (installation next to drawers possible with a distance of >12 mm to cabinet side panel)
- > Operation: The furniture lock remains unlocked for 3 seconds when presenting an authorised user key in combination with the FT 200, FT 200 SAP furniture terminal (standard spring bolt lock function). The lock locks automatically once the open time has elapsed. The door status (locked/unlocked) can be determined with feedback contact and additional macro. The connected FT 200 furniture terminal will generate an alarm accordingly
- > Technical data:
 - Power supply: 12V DC (direct current)
 - Current consumption ≤10 mA
 - Current open/closed: 100mA/40 ms
 - Tensile load: 1000 N
 - For door width max. 200 mm, test installation required
- > Optional, integrated contact for door status indication EFL 3C
- > Flat design for variable and integrated installation in furniture
- > EFL 3, can be mounted from both sides
- > Locking component can be mounted frontal or laterally
- > Suitable for furniture construction with soft closing and self closing mechanisms. Not suitable for drawers and hinged doors with push to open functions
- > Comprises:
 - 1x Furniture lock, nickel-plated zinc alloy
 - 1x Locking component, nickel-plated zinc alloy
- > Order qty: 1 pc

5

Door Locking and Security: Access Control



IP20



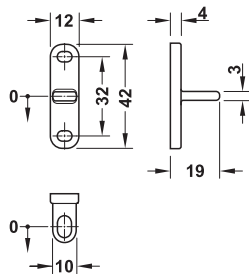
No additional fascia/material (e.g. slotted sheet metal plate) may be installed between EFL 3/EFL 3C and locking component

Item	Cat. No.
EFL 3 with feedback contact	237.59.000
EFL 3C with separate feedback contact	237.59.001

Dialock EFL 3 Locking component, self-adjusting



Locking plate, crossways



- > Application: For EFL 3
- Material: Zinc alloy
- > Order qty: 1 pc



Cannot be combined with the EFL 3C at present

Item	Cat. No.
Locking component for EFL 3, self-adjusting	237.59.029

PAGE CREATED
17.02.20