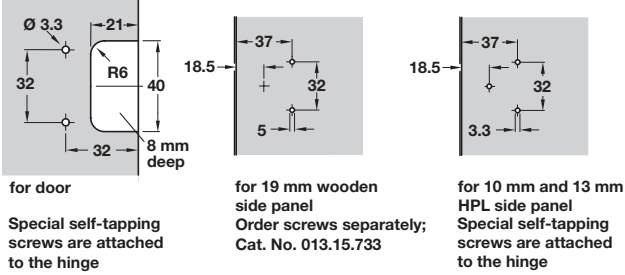


HINGE WITH 5 MM EXPOSED AXLE, FOR THIN DOORS

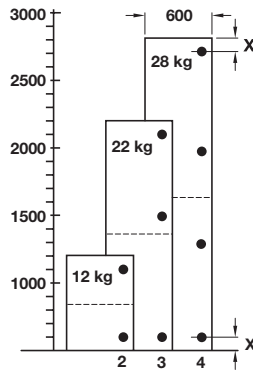
Drilling diagram



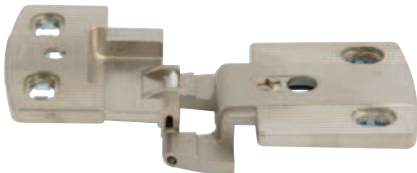
- > High quality hinge, tested to ANSI Grade 1 (100,000 cycles)
- > Shallow design, for thin doors or HPL panels
- > For corner or centre panel mounting, 6 mm gap
- > For door thickness 10-13 mm
- > Opening angle 270° for full overlay, 240° for half overlay
- > 0 mm door offset from 140° opening angle
- > Ø 5 mm axle, 47 mm length
- > With lateral adjustment from -2 mm up to +1 mm via side part
- With height adjustment from -2 mm up to +2 mm via cup excenter
- With depth adjustment from -1 mm up to +1 mm via long holes in side part
- > With catch
- > Nickel-plated zinc alloy, hardened steel axle in maintenance free plastic bearings
- > Order qty: 1 pc

Number of hinges per door

X = max. 100 mm
 Guideline value for 13 mm HPL panel thickness
 Maximum door width 600 mm
 For door widths less than 400 mm carry out a trial mounting
 Door width should not be more than door height
 With heavy loads use an additional hinge max. 100 mm below the upper hinge



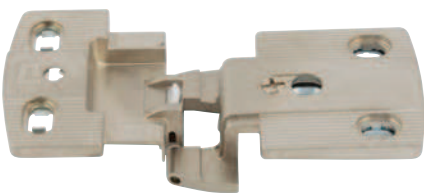
For 10/13 mm side wall thickness



- > Opening angle 270° for full overlay, 240° for half overlay
- > Door overlay 3.5 mm:
 10 mm side wall thickness for side panel full overlay mounting - 270° opening angle
 13 mm side wall thickness for centre panel half overlay mounting - 240° opening angle

Overlay	For side/centre panel mounting	Cat. No.
3.5 mm	10/13 mm side wall thickness	344.75.760

For 13/19 mm side wall thickness



- > Opening angle 270° for full overlay, 240° for half overlay
- > Door overlay 7.0 mm:
 10 mm side wall thickness for side panel full overlay mounting - 270° opening angle
 13 mm side wall thickness for centre panel half overlay mounting - 240° opening angle

Overlay	For side/centre panel mounting	Cat. No.
7.0 mm	13/19 mm side wall thickness	344.75.770

TOH TECHNOLOGY 2018, © Häfele U.K., Ltd 2018. Dimensional data not binding. We reserve the right to alter specifications without notice.