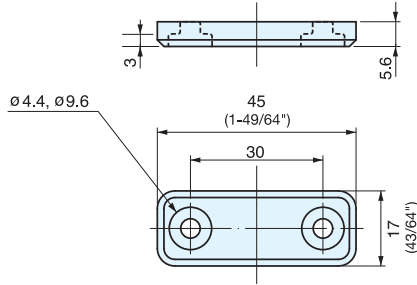


SEALED COUNTER PLATE

MC-JMP45



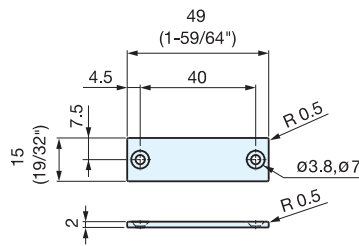
- Sealed strike for magnetic catches.
- Eliminates metal particles when used with MC-JM sealed magnet.
- Same design as MC-JM45. Marked blue on back to distinguish it.

Item No.	Weight (g)	Box (pcs)	Carton (pcs)
MC-JMP45WT	7.3	100	1000
MC-JMP45BL	7.3	100	1000

Part Name	Material	Finish/Color
Body	Polypropylene	White/Black
Plate	Steel	Plain

STAINLESS STEEL COUNTER PLATE

MC-JM49



- Special plate for MC-JM magnetic catches.
- High corrosion resistance, similar to 304 stainless steel, ideal for application where rust is an issue.

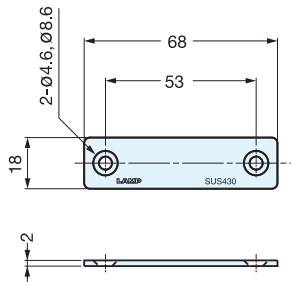
Material	Finish
Stainless Steel (Special)	Polished

Item No.	Weight (g)	Box (pcs)	Carton (pcs)
MC-JM49	10	100	1000

STAINLESS STEEL COUNTER PLATE



AS-68



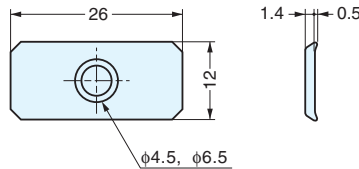
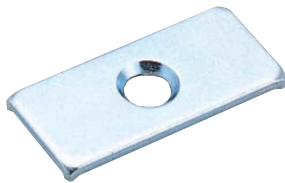
- Special plate for MC-JM magnetic catches.
- 430 stainless steel provides good corrosion resistance.

Material	Finish
430 Stainless Steel	Polished

Item No.	Weight (g)	Box (pcs)	Carton (pcs)
AS-68	17	100	1000

COUNTER PLATE

SP-0207

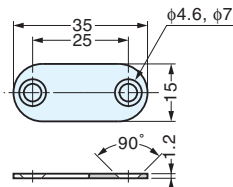


Material	Finish
Steel	Chromate

Item No.	Weight (g)	Box (pcs)
SP0207	3.1	5000

COUNTER PLATE

MC-YN001U



Item No.	Weight (g)	Box (pcs)	Material	Finish
MC-YN001U	4	2500	Steel	Nickel