

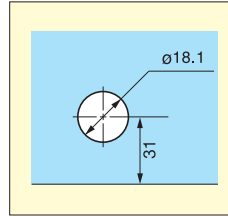
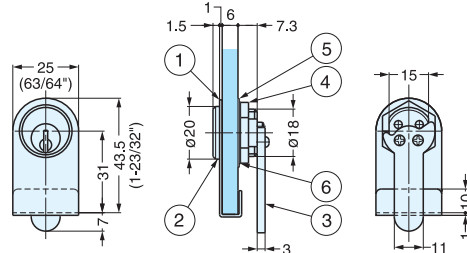
GLASS DOOR CAM LOCK



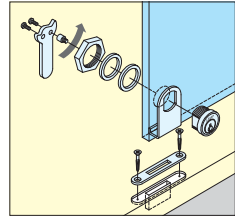
2100GL



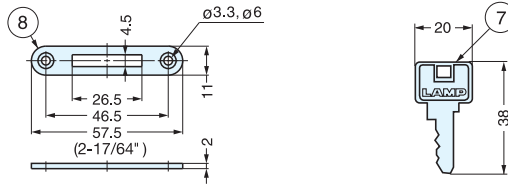
- Chrome-plated brass cylinder glass door lock with 2 keys.
- Key is removable in locked position only. (Key works as a knob in unlocked position)
- 12 key changes available.
- Master key NOT available.
- Keys can be shared with other 2100 series locks.



Cut Out Dimensions



Installation



No.	Part Name	Material	Finish
①	Front Plate	304 Stainless Steel	Polished
②	Body	Brass	Nickel
③	Cam	Steel	
④	Hex. Nut	Brass	Chrome
⑤	Plastic Washer	Polyamide	
⑥	Washer	Steel	Chrome
⑦	Key	Brass	Nickel
⑧	Counterplate	Steel	Chrome

Item No.	Glass Thickness	Weight (g)	Box (pcs)	Carton (pcs)
2100GL	4~6	75	12	120

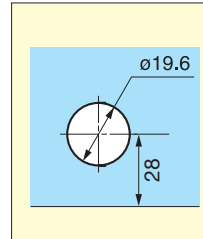
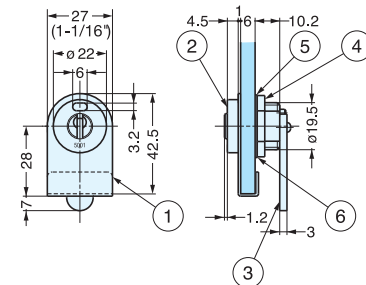
GLASS DOOR LOCK (W/INDICATOR)



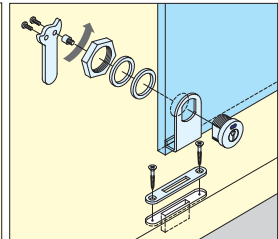
2200GL



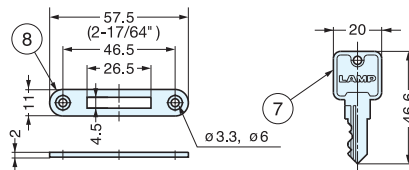
- Brass cylinder lock with 2 keys.
- Locked / Unlocked Indicator
- Unlocked : Blue
- Locked : Red
- 12 key changes available.
- Master key system (2200 GLMK) available at surcharge.
- Please specify KA (Keyed Alike) or KD (Keyed Different) when ordering.
- Key can be shared with other 2200 series locks.



Cut Out Dimensions



Installation



No.	Part Name	Material	Finish
①	Cylinder	303 Stainless Steel	Polished
②	Body	Zinc Alloy	Nickel
③	Cam	Steel	
④	Hex. Nut	Brass	Chrome
⑤	Plastic Washer	Polyamide	
⑥	Washer	Steel	Chrome
⑦	Key	Brass	Nickel
⑧	Counterplate	Steel	Chrome

Item No.	Glass Thickness	Weight (g)	Box (pcs)	Carton (pcs)
2200GL	4~6	75	12	120