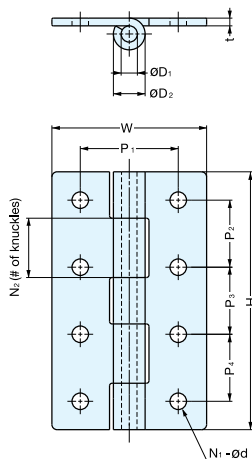


# BUTT HINGE



# LSA, LSB

HINGES



LSB-100 shown

• With or without screw hole type available.

Material	Finish
304 Stainless Steel	Mirror

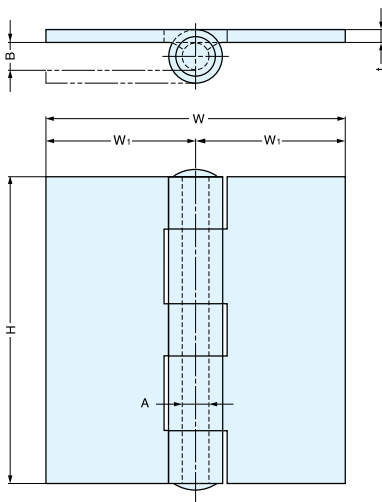
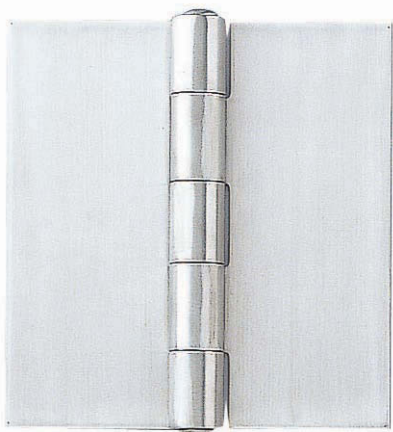
Item No.	Holes	H	W	P <sub>1</sub>	P <sub>2</sub>	P <sub>3</sub>	P <sub>4</sub>	t	d	D <sub>1</sub>	(D <sub>2</sub> )	N <sub>1</sub>	N <sub>2</sub>	Door Weight (kg/pair)	Weight (g)	Box (pcs)	Carton (pcs)
LSA- 40	Without Holes	40 ( 1-37/64" )	35 ( 1-3/8" )	-	-	-	-	1.5	-	3	6.3	-	3	6 (13 lbs/pair)	25	20	500
LSA- 50		50 ( 1-31/32" )		-	-	-	-	-	-	-	-	-	-	8 (17 lbs/pair)	30		
LSA- 65		65 ( 2-9/16" )	50 (1-31/32")	-	-	-	-	2	-	4.5	8.8	-	5	13 (28 lbs/pair)	66		
LSA- 75		75 ( 2-61/64" )		-	-	-	-	-	-	-	-	-		15 (33 lbs/pair)	76		
LSA- 90		90 ( 3-35/64" )	60 (2-23/64")	-	-	-	-	-	-	-	-	-	-	25 (55 lbs/pair)	190		
LSA-100		100 ( 3-15/16" )		-	-	-	-	3	-	6	12.3	-	-	30 (66 lbs/pair)	200		
LSB- 40	With Holes	40 ( 1-37/64" )	35 ( 1-3/8" )	22	26	-	-	1.5	3.2	3	6.3	4	3	6 (13 lbs/pair)	25	20	500
LSB- 50		50 ( 1-31/32" )		34	-	-	-	-	4.3	-	-	-	-	8 (17 lbs/pair)	30		
LSB- 65		65 ( 2-9/16" )	50 (1-31/32")	30	23	23	-	2	-	4.5	8.8	6	5	13 (28 lbs/pair)	64		
LSB- 75		75 ( 2-61/64" )		27	27	-	-	-	5.3	-	-			-	15 (33 lbs/pair)		
LSB- 90		90 ( 3-35/64" )	60 (2-23/64")	35	35	-	-	-	-	-	-	-	-	25 (55 lbs/pair)	180		
LSB-100		100 ( 3-15/16" )		38	26	26	26	3	6.4	6	12.3	8	-	30 (66 lbs/pair)	195		

BUTT HINGES

# STAINLESS STEEL WELD-ON HINGE



# LSK



Material	Finish
304 Stainless Steel	Satin

Item No.	H	W <sub>1</sub>	W	A	B	t	Weight (g)	Box (pcs)	Carton (pcs)
LSK-1157-1	51 ( 2-1/64" )	25	50 ( 1-31/32" )	6	6	2.5	84	10	250
LSK-1157-2	64 ( 2-33/64" )	31.5	63 ( 2-31/64" )			3	150		
LSK-1157-3	76 ( 2-63/64" )	37	74 ( 2-29/32" )	7	7	200			
LSK-1157-4	89 ( 3-1/2" )	43	86 ( 3-25/64" )	8	8	261			
LSK-1157-5	102 ( 4-1/64" )	49	98 ( 3-55/64" )	11	9	4	438	6	30
LSK-1157-6	127 ( 5" )	61.5	123 ( 4-27/32" )			4	691		
LSK-1157-7	152 ( 5-63/64" )	71.5	143 ( 5-5/8" )			4	955		